

SHOP MATERIAL LIST FOR 1 ASSEMBLY						
Mark	Size	Grade	No.	Length (mm)	Area (m) <sup>2</sup>	Weight (kg)
AR1	ROD20	S275	1	450	0.028	1.0
F2	PD40*10	S275	1	10	0.002	0.1
F3	PD40*10	S275	1	20	0.004	0.1
p7	FLT10*100	S275	1	100	0.024	0.8
<b>Total</b>					0.058	2.0

**GENERAL NOTES**

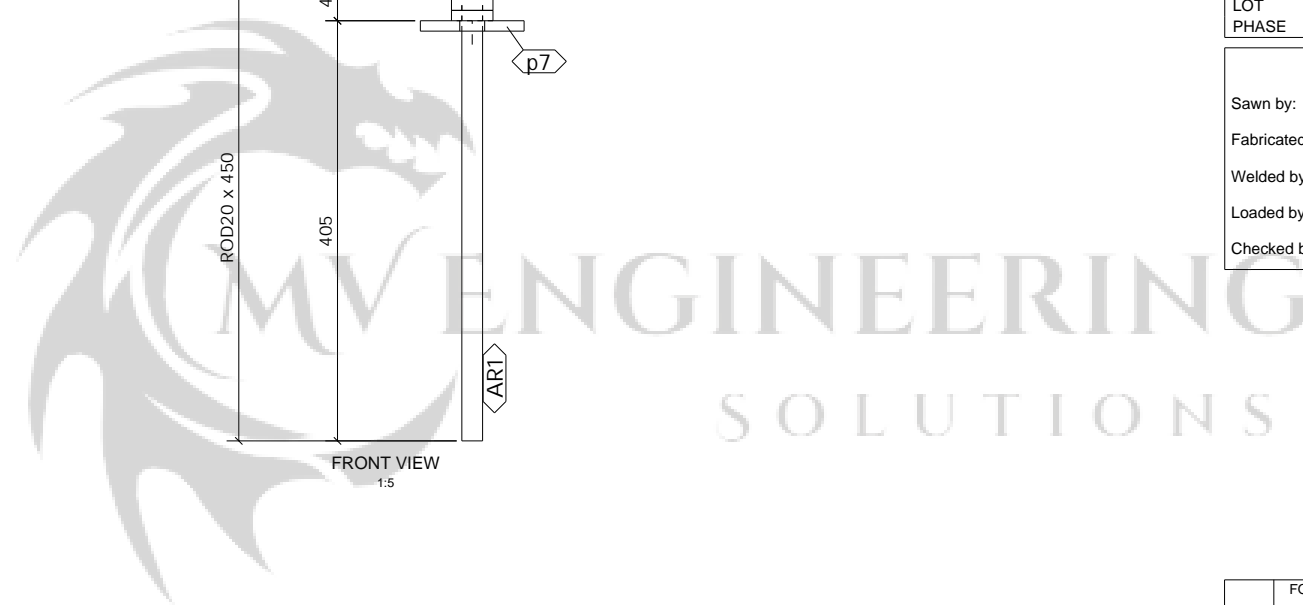
All Holes to be **22** Dia UNO Slot hole length is to outside  
 All Welds to be **6** FW. UNO

All Steelwork Manufactured to:  
 BS EN 1090-2: Execution Class **EXC2** U.N.O.

FINISH **S.B. & PRIME**

LOT **0** QTY **24**  
 PHASE **1** QTY **24**

FABRICATION STATUS	
Sawn by: _____	Date: _____
Fabricated by: _____	Date: _____
Welded by: _____	Date: _____
Loaded by: _____	Date: _____
Checked by: _____	Date: _____



REV	DESCRIPTION	By	Date	By	Date
1	FOR FABRICATION	PCS	14.07.2022	SK	14.07.2022
MARK	DESCRIPTION	CREATED		CHECKED	

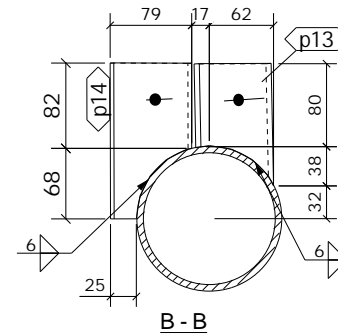
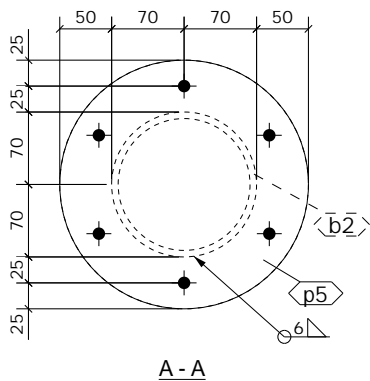
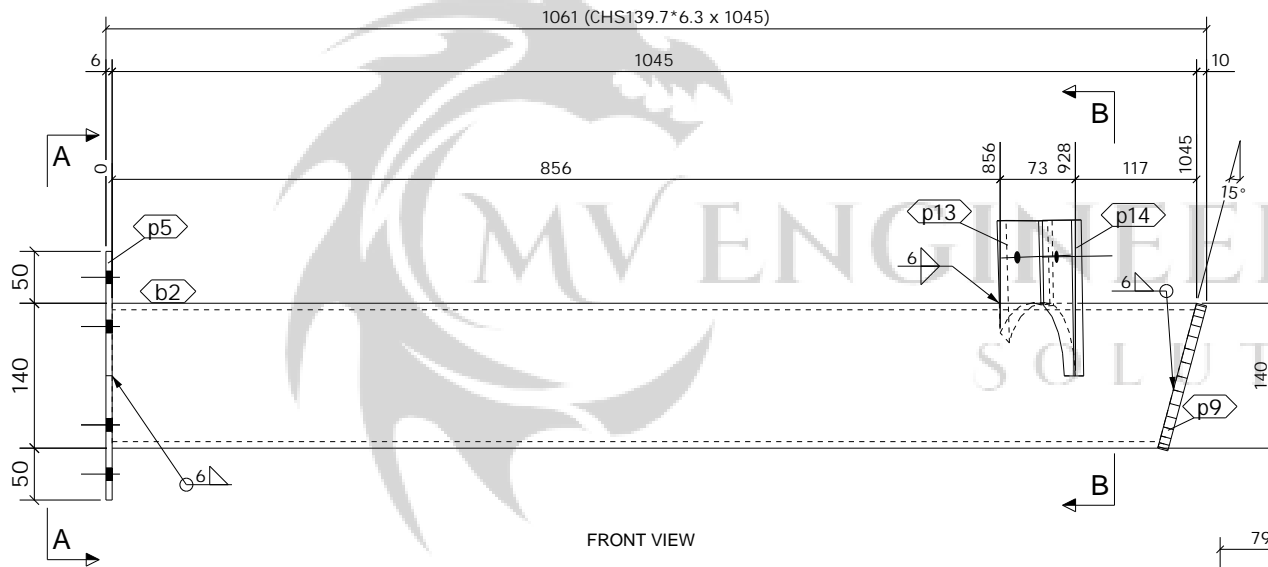
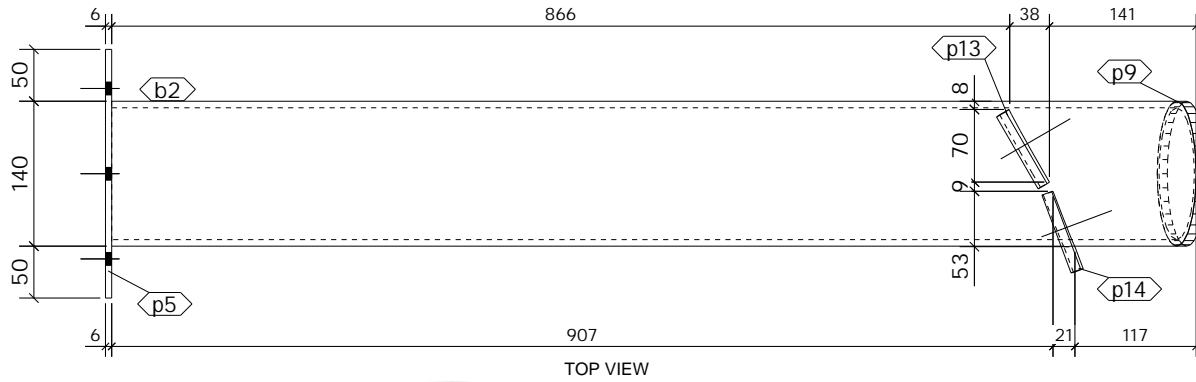
**CLIENT:** ----- **DATE CREATED:** 18.06.2022

**PROJECT:** KFC HEMEL HEMPSTEAD **DRAWN BY:** PCS

**CONTRACT NO:** ---- **DRAWING NO:** [AR.1] **REV:** 1

24 No. ANCHORROD REQUIRED AS DRAWN MARKED AR1

ASSEMBLY / SUB ASSEMBLY STATUS	
24	THIS IS IT'S OWN ASSEMBLY



1 No. BEAM

REQUIRED AS DRAWN MARKED BM1

SHOP MATERIAL LIST FOR 1 ASSEMBLY

Mark	Size	Grade	No.	Length (mm)	Area (m) <sup>2</sup>	Weight (kg)
b2	CHS139.7*6.3	S355-JR	1	1045	0.451	20.9
p5	PLT6*239.7	S275	1	240	0.092	2.1
p9	PLT10*139	S275	1	144	0.036	1.2
p13	FLT10*80	S275	1	118	0.018	0.6
p14	FLT10*80	S275	1	150	0.023	0.7
<b>Total</b>					0.621	25.5

GENERAL NOTES

All Holes to be 22 Dia UNO Slot hole length is to outside  
 All Welds to be 6 FW. UNO

All Steelwork Manufactured to:  
 BS EN 1090-2: Execution Class EXC2 U.N.O.

FINISH S.B. & PRIME  
 LOT 0 QTY 1  
 PHASE 1 QTY 1

FABRICATION STATUS

Sawn by: \_\_\_\_\_ Date: \_\_\_\_\_  
 Fabricated by: \_\_\_\_\_ Date: \_\_\_\_\_  
 Welded by: \_\_\_\_\_ Date: \_\_\_\_\_  
 Loaded by: \_\_\_\_\_ Date: \_\_\_\_\_  
 Checked by: \_\_\_\_\_ Date: \_\_\_\_\_

REV	DESCRIPTION	By	Date	By	Date
1	FOR FABRICATION	PCS	14.07.2022	SK	14.07.2022
MARK		CREATED		CHECKED	

CLIENT: DATE CREATED:

----- 13.07.2022

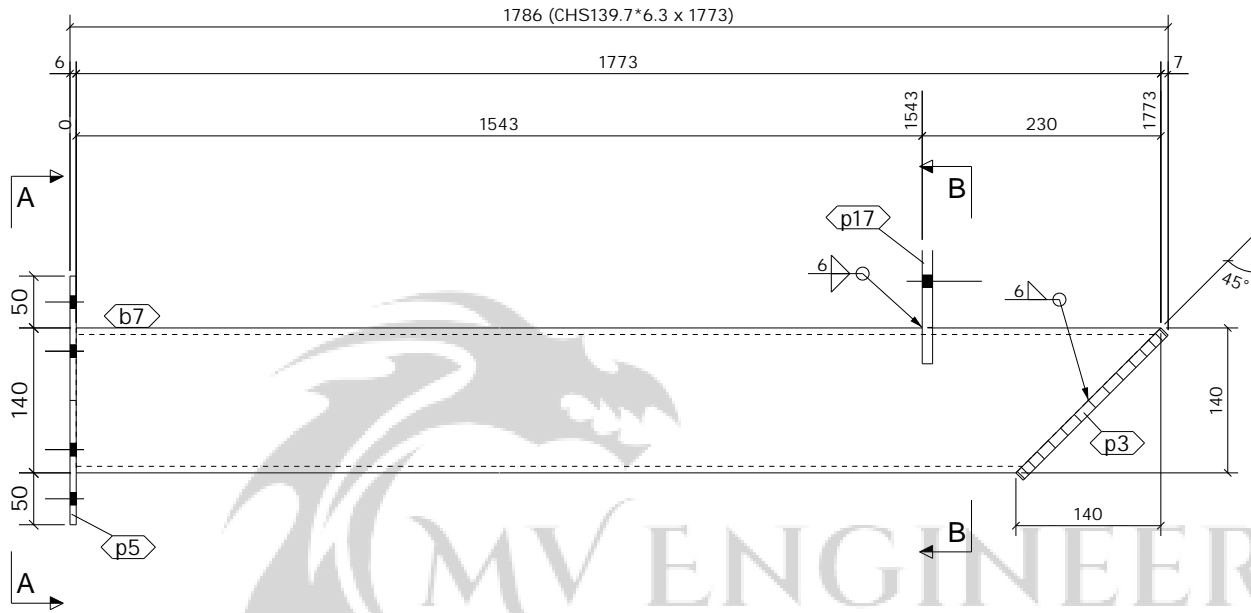
PROJECT: DRAWN BY:

KFC HEMEL HEMPSTEAD PCS

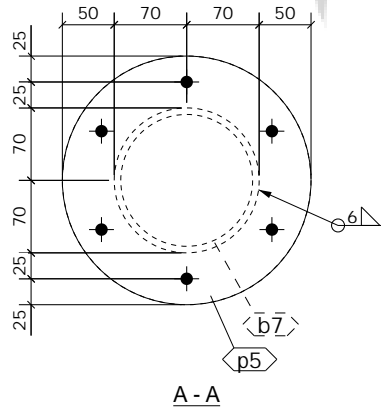
CONTRACT NO: DRAWING NO: REV:

---- [BM.1] 1

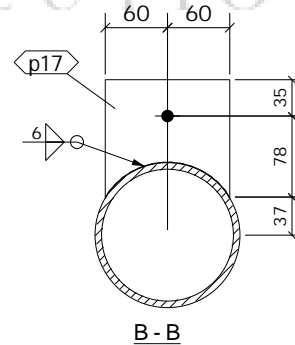
ASSEMBLY / SUB ASSEMBLY STATUS	
1	THIS IS IT'S OWN ASSEMBLY



FRONT VIEW



A - A



B - B

**SHOP MATERIAL LIST FOR 1 ASSEMBLY**

Mark	Size	Grade	No.	Length (mm)	Area (m <sup>2</sup> )	Weight (kg)
b7	CHS139.7*6.3	S355-JR	1	1773	0.748	34.7
p3	PLT10*139.1	S275	1	197	0.048	1.7
p5	PLT6*239.7	S275	1	240	0.092	2.1
p17	FLT10*120	S275	1	115	0.027	0.8
<b>Total</b>					<b>0.915</b>	<b>39.3</b>

**GENERAL NOTES**

All Holes to be **22** Dia UNO Slot hole length is to outside  
 All Welds to be **6** FW. UNO

All Steelwork Manufactured to:  
 BS EN 1090-2: Execution Class **EXC2** U.N.O.

FINISH **S.B. & PRIME**  
 LOT **0** QTY **6**  
 PHASE **1** QTY **6**

**FABRICATION STATUS**

Sawn by: \_\_\_\_\_ Date: \_\_\_\_\_  
 Fabricated by: \_\_\_\_\_ Date: \_\_\_\_\_  
 Welded by: \_\_\_\_\_ Date: \_\_\_\_\_  
 Loaded by: \_\_\_\_\_ Date: \_\_\_\_\_  
 Checked by: \_\_\_\_\_ Date: \_\_\_\_\_

2	FOR FABRICATION	PCS	19.08.2022	SK	19.08.2022
1	FOR FABRICATION	PCS	14.07.2022	SK	14.07.2022
REV		By	Date	By	Date
MARK	DESCRIPTION	CREATED		CHECKED	

**CLIENT:** ..... **DATE CREATED:** 13.07.2022

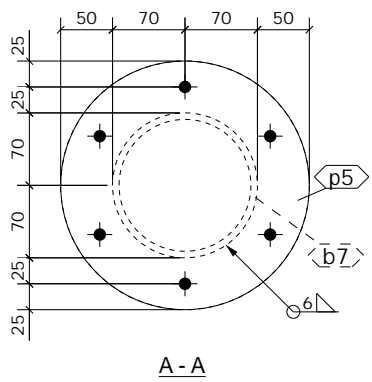
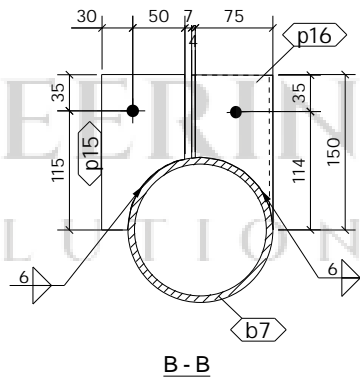
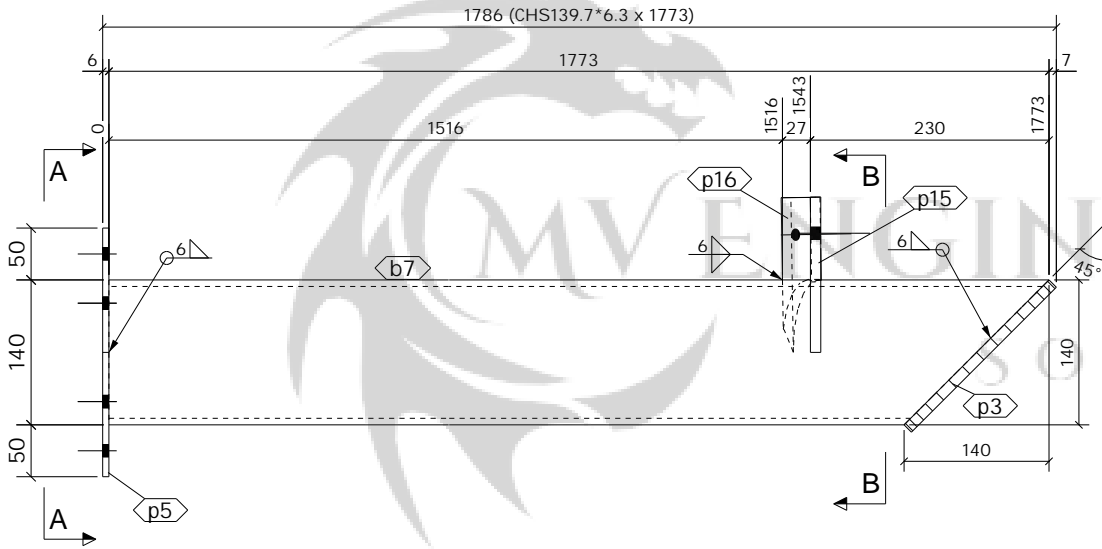
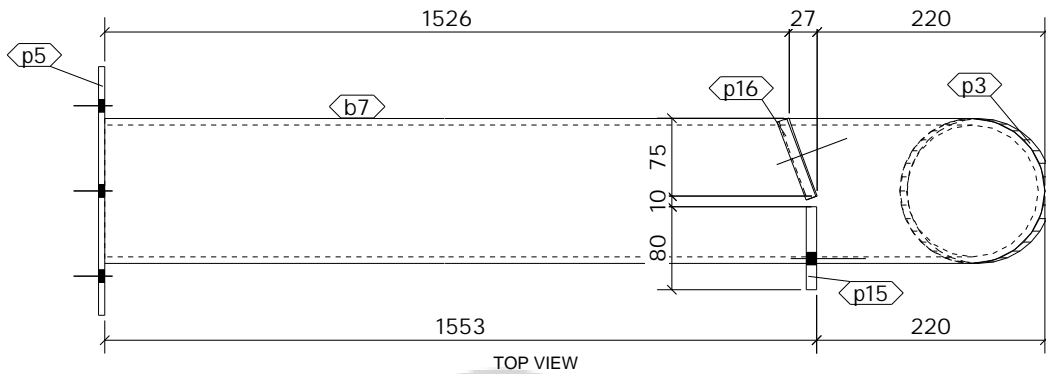
**PROJECT:** KFC HEMEL HEMPSTEAD **DRAWN BY:** PCS

**CONTRACT NO:** ---- **DRAWING NO:** [BM.2] **REV:** 2

6 No. BEAM

REQUIRED AS DRAWN MARKED BM2

ASSEMBLY / SUB ASSEMBLY STATUS	
6	THIS IS IT'S OWN ASSEMBLY



TOP VIEW

FRONT VIEW

A - A

1 No. BEAM

REQUIRED AS DRAWN MARKED BM3

SHOP MATERIAL LIST FOR 1 ASSEMBLY

Mark	Size	Grade	No.	Length (mm)	Area (m) <sup>2</sup>	Weight (kg)
b7	CHS139.7*6.3	S355-JR	1	1773	0.748	34.7
p3	PLT10*139.1	S275	1	197	0.048	1.7
p5	PLT6*239.7	S275	1	240	0.092	2.1
p15	FLT10*80	S275	1	150	0.023	0.7
p16	FLT10*80	S275	1	149	0.019	0.6
<b>Total</b>					0.930	39.8

GENERAL NOTES

All Holes to be 22 Dia UNO Slot hole length is to outside  
 All Welds to be 6 FW. UNO

All Steelwork Manufactured to:  
 BS EN 1090-2: Execution Class EXC2 U.N.O.

FINISH S.B. & PRIME  
 LOT 0 QTY 1  
 PHASE 1 QTY 1

FABRICATION STATUS

Sawn by: \_\_\_\_\_ Date: \_\_\_\_\_  
 Fabricated by: \_\_\_\_\_ Date: \_\_\_\_\_  
 Welded by: \_\_\_\_\_ Date: \_\_\_\_\_  
 Loaded by: \_\_\_\_\_ Date: \_\_\_\_\_  
 Checked by: \_\_\_\_\_ Date: \_\_\_\_\_

REV	DESCRIPTION	By	Date	By	Date
1	FOR FABRICATION	PCS	14.07.2022	SK	14.07.2022
MARK	DESCRIPTION	CREATED		CHECKED	

CLIENT: ----- DATE CREATED: 13.07.2022

PROJECT: KFC HEMEL HEMPSTEAD DRAWN BY: PCS

CONTRACT NO: ---- DRAWING NO: [BM.3] REV: 1

ASSEMBLY / SUB ASSEMBLY STATUS	
1	THIS IS IT'S OWN ASSEMBLY

**SHOP MATERIAL LIST FOR 1 ASSEMBLY**

Mark	Size	Grade	No.	Length (mm)	Area (m) <sup>2</sup>	Weight (kg)
b5	CHS168.3*6.3	S355-JR	1	930	0.494	23.1
p11	PLT6*268.3	S275	2	268	0.230	5.2
<b>Total</b>					0.724	28.3

**GENERAL NOTES**

All Holes to be **22** Dia UNO Slot hole length is to outside  
 All Welds to be **6** FW. UNO

All Steelwork Manufactured to:  
 BS EN 1090-2: Execution Class **EXC2** U.N.O.

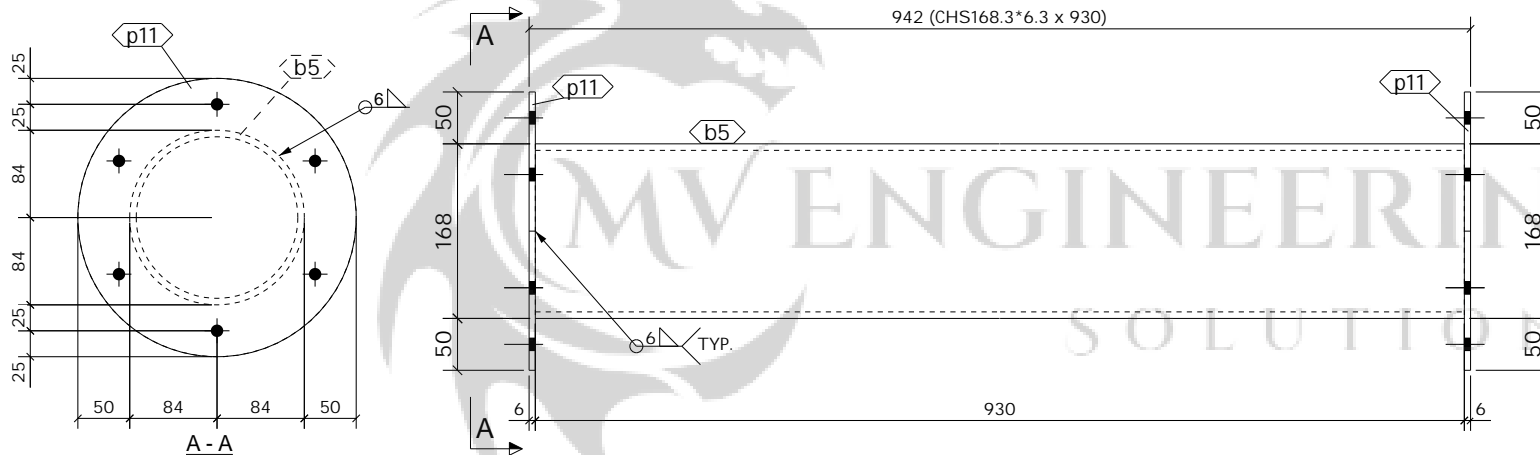
FINISH **S.B. & PRIME**

LOT **0** QTY **5**

PHASE **1** QTY **5**

**FABRICATION STATUS**

Sawn by: \_\_\_\_\_ Date: \_\_\_\_\_  
 Fabricated by: \_\_\_\_\_ Date: \_\_\_\_\_  
 Welded by: \_\_\_\_\_ Date: \_\_\_\_\_  
 Loaded by: \_\_\_\_\_ Date: \_\_\_\_\_  
 Checked by: \_\_\_\_\_ Date: \_\_\_\_\_



FRONT VIEW

5 No. BEAM

REQUIRED AS DRAWN MARKED **BM4**

REV	DESCRIPTION	By	Date	By	Date
1	FOR FABRICATION	PCS	14.07.2022	SK	14.07.2022
MARK		CREATED		CHECKED	

**CLIENT:** \_\_\_\_\_ **DATE CREATED:** 13.07.2022

**PROJECT:** KFC HEMEL HEMPSTEAD **DRAWN BY:** PCS

**CONTRACT NO:** ---- **DRAWING NO:** [BM.4] **REV:** 1

ASSEMBLY / SUB ASSEMBLY STATUS	
5	THIS IS IT'S OWN ASSEMBLY

**SHOP MATERIAL LIST FOR 1 ASSEMBLY**

Mark	Size	Grade	No.	Length (mm)	Area (m <sup>2</sup> )	Weight (kg)
b7	CHS139.7*6.3	S355-JR	1	1773	0.748	34.7
p3	PLT10*139.1	S275	1	197	0.048	1.7
p5	PLT6*239.7	S275	1	240	0.092	2.1
p19	FLT10*75	S275	1	91	0.016	0.5
<b>Total</b>					0.904	39.0

**GENERAL NOTES**

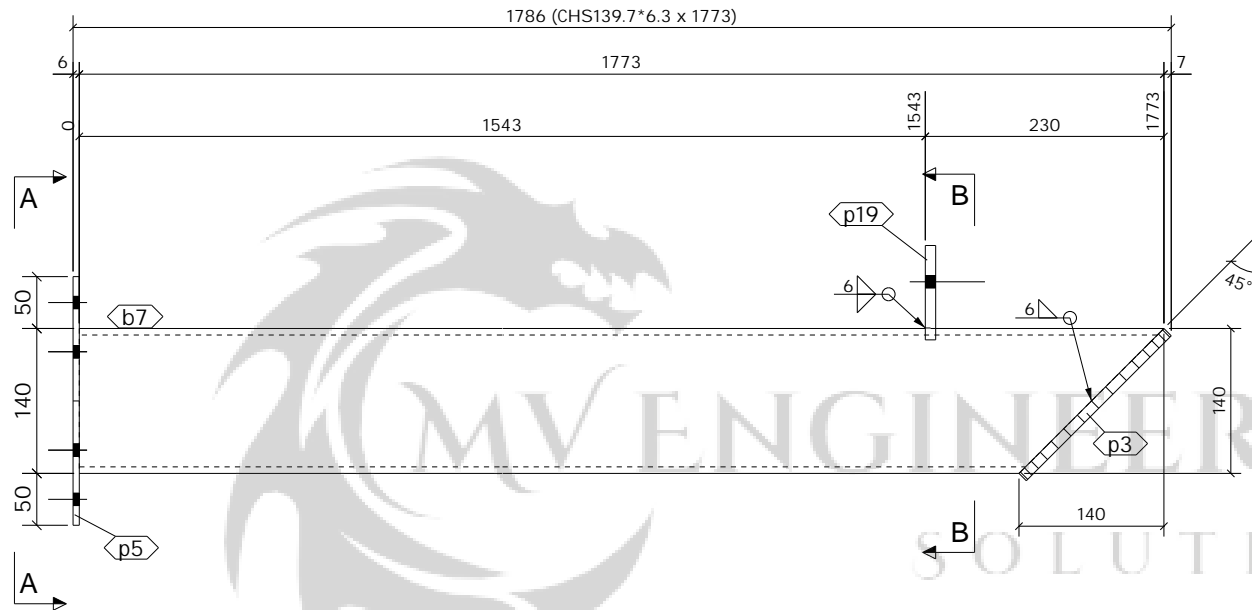
All Holes to be **22 Dia UNO** Slot hole length is to outside  
 All Welds to be **6 FW. UNO**

All Steelwork Manufactured to:  
 BS EN 1090-2: Execution Class **EXC2** U.N.O.

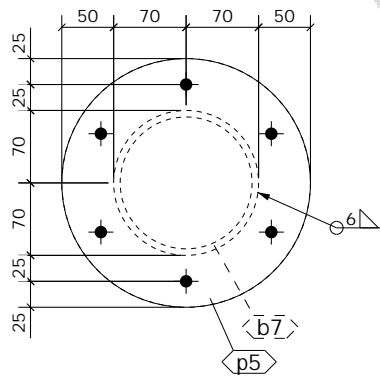
FINISH **S.B. & PRIME**  
 LOT **0** QTY **2**  
 PHASE **1** QTY **2**

**FABRICATION STATUS**

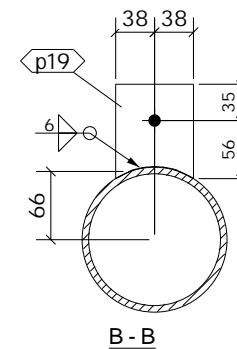
Sawn by: \_\_\_\_\_ Date: \_\_\_\_\_  
 Fabricated by: \_\_\_\_\_ Date: \_\_\_\_\_  
 Welded by: \_\_\_\_\_ Date: \_\_\_\_\_  
 Loaded by: \_\_\_\_\_ Date: \_\_\_\_\_  
 Checked by: \_\_\_\_\_ Date: \_\_\_\_\_



FRONT VIEW



A - A



B - B

2 No. BEAM

REQUIRED AS DRAWN MARKED **BM5**

REV	DESCRIPTION	By	Date	By	Date
3	FOR FABRICATION	PCS	20.08.2022	SK	20.08.2022
2	FOR FABRICATION	PCS	19.08.2022	SK	19.08.2022
1	FOR FABRICATION	PCS	14.07.2022	SK	14.07.2022
MARK	DESCRIPTION	CREATED		CHECKED	

**CLIENT:** ----- **DATE CREATED:** 19.08.2022

**PROJECT:** KFC HEMEL HEMPSTEAD **DRAWN BY:** PCS

**CONTRACT NO:** ---- **DRAWING NO:** [BM.5] **REV:** 3

ASSEMBLY / SUB ASSEMBLY STATUS	
2	THIS IS IT'S OWN ASSEMBLY

**SHOP MATERIAL LIST FOR 1 ASSEMBLY**

Mark	Size	Grade	No.	Length (mm)	Area (m <sup>2</sup> )	Weight (kg)
b7	CHS139.7*6.3	S355-JR	1	1773	0.748	34.7
p3	PLT10*139.1	S275	1	197	0.048	1.7
p5	PLT6*239.7	S275	1	240	0.092	2.1
p19	FLT10*75	S275	1	91	0.016	0.5
<b>Total</b>					0.904	39.0

**GENERAL NOTES**

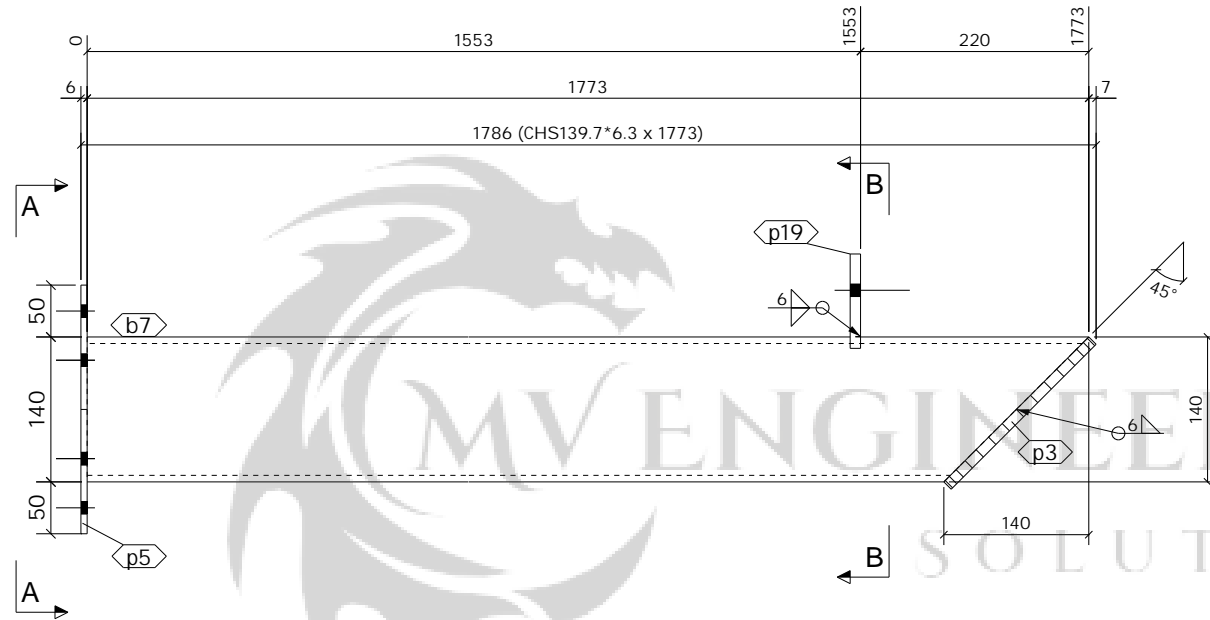
All Holes to be **22 Dia UNO** Slot hole length is to outside  
 All Welds to be **6 FW. UNO**

All Steelwork Manufactured to:  
 BS EN 1090-2: Execution Class **EXC2** U.N.O.

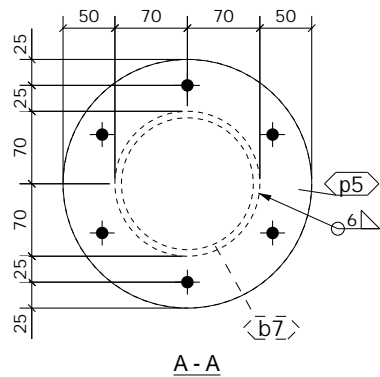
FINISH **S.B. & PRIME**  
 LOT **0** QTY **1**  
 PHASE **1** QTY **1**

**FABRICATION STATUS**

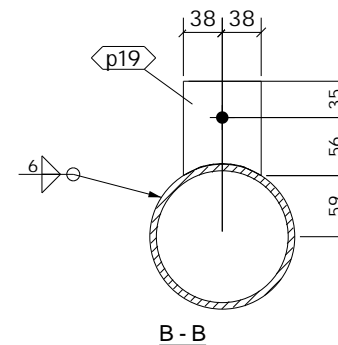
Sawn by: \_\_\_\_\_ Date: \_\_\_\_\_  
 Fabricated by: \_\_\_\_\_ Date: \_\_\_\_\_  
 Welded by: \_\_\_\_\_ Date: \_\_\_\_\_  
 Loaded by: \_\_\_\_\_ Date: \_\_\_\_\_  
 Checked by: \_\_\_\_\_ Date: \_\_\_\_\_



FRONT VIEW



A - A



B - B

1 No. BEAM

REQUIRED AS DRAWN MARKED **BM6**

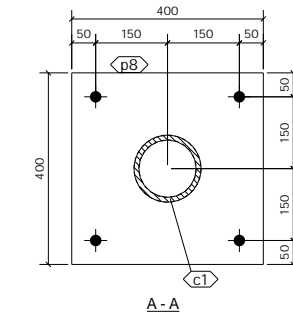
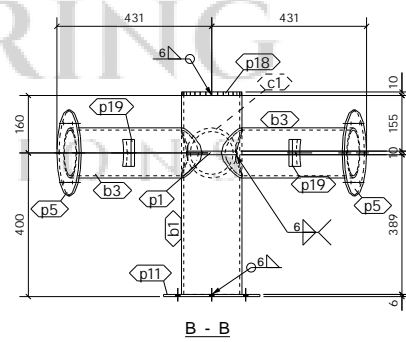
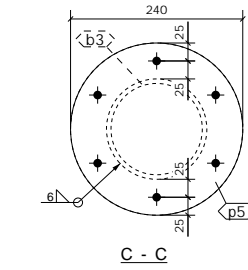
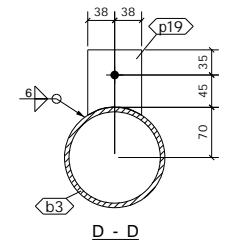
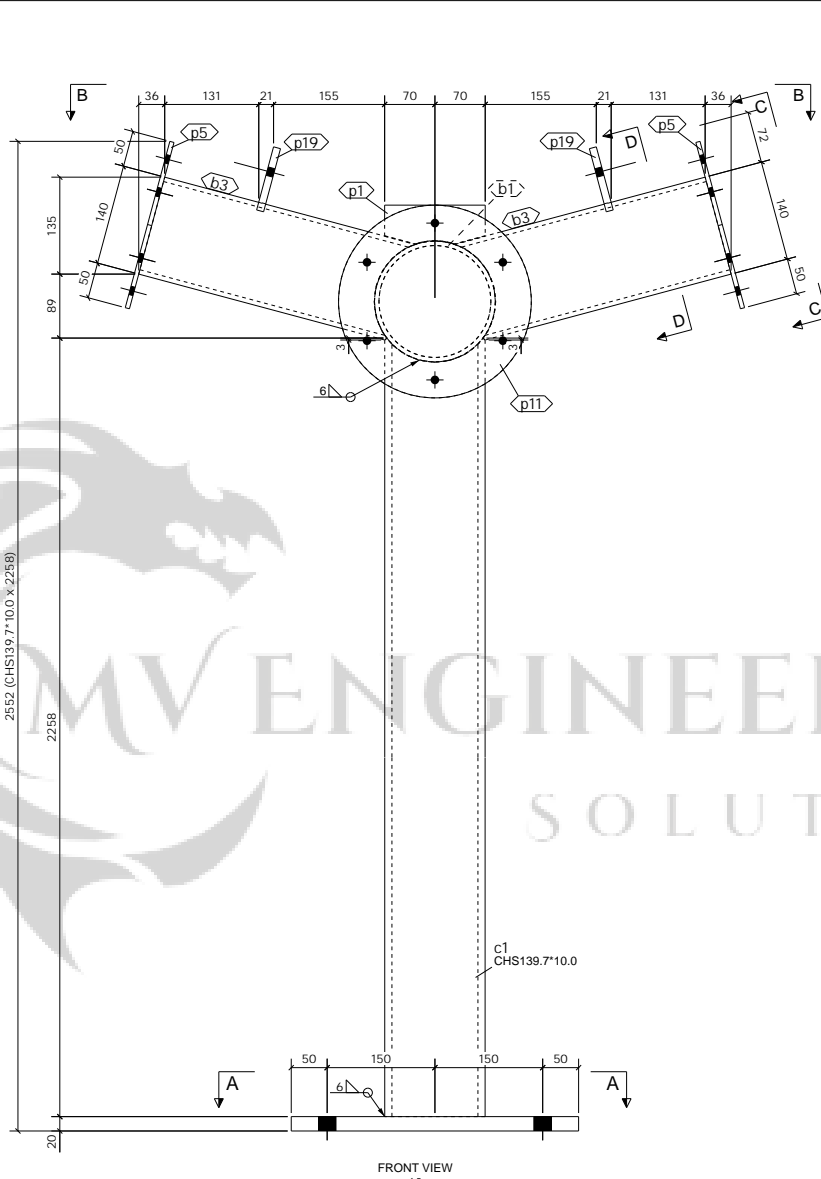
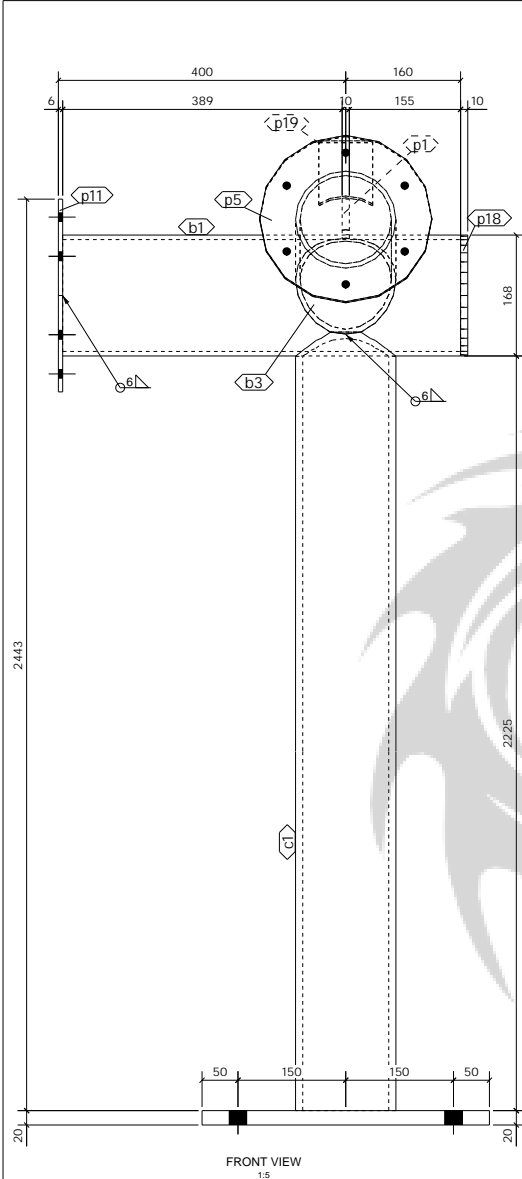
REV	DESCRIPTION	By	Date	By	Date
MARK	DESCRIPTION	CREATED		CHECKED	
3	FOR FABRICATION	PCS	20.08.2022	SK	20.08.2022
2	FOR FABRICATION	PCS	19.08.2022	SK	19.08.2022
1	FOR FABRICATION	PCS	14.07.2022	SK	14.07.2022

**CLIENT:** ----- **DATE CREATED:** 19.08.2022

**PROJECT:** KFC HEMEL HEMPSTEAD **DRAWN BY:** PCS

**CONTRACT NO:** ---- **DRAWING NO:** [BM.6] **REV:** 3

ASSEMBLY / SUB ASSEMBLY STATUS	
1	THIS IS IT'S OWN ASSEMBLY



SHOP MATERIAL LIST FOR 1 ASSEMBLY						
Mark	Size	Grade	No.	Length (mm)	Area (m <sup>2</sup> )	Weight (kg)
b1	CHS168.3*6.3	S355-JR	1	554	0.295	13.8
b3	CHS139.7*6.3	S355-JR	2	361	0.303	13.8
c1	CHS139.7*10.0	S275	1	2258	0.984	70.4
p1	FLT10*140	S275	1	55	0.018	0.5
p5	PLT6*239.7	S275	2	240	0.185	4.1
p8	FLT20*400	S275	1	400	0.352	25.1
p11	PLT6*268.3	S275	1	268	0.115	2.6
p18	PLT10*167.5	S275	1	167	0.049	1.7
p19	FLT10*75	S275	2	91	0.032	1.0
				<b>Total</b>	<b>2.332</b>	<b>133.2</b>

**GENERAL NOTES**

All Holes to be 22 Dia UNO Slot hole length is to outside  
 All Welds to be 6 FW. UNO

All Steelwork Manufactured to:  
 BS EN 1090-2; Execution Class **EXC2** U.N.O.

FINISH **S.B. & PRIME**

LOT 0 QTY 1  
 PHASE 1 QTY 1

**FABRICATION STATUS**

Sawn by: \_\_\_\_\_ Date: \_\_\_\_\_  
 Fabricated by: \_\_\_\_\_ Date: \_\_\_\_\_  
 Welded by: \_\_\_\_\_ Date: \_\_\_\_\_  
 Loaded by: \_\_\_\_\_ Date: \_\_\_\_\_  
 Checked by: \_\_\_\_\_ Date: \_\_\_\_\_

3	FOR FABRICATION	PCS	20.08.2022	SK	20.08.2022
2	FOR FABRICATION	PCS	19.08.2022	SK	19.08.2022
1	FOR FABRICATION	PCS	14.07.2022	SK	14.07.2022
REV		By	Date	By	Date
MARK	DESCRIPTION	CREATED	CHECKED		

**CLIENT:** \_\_\_\_\_ **DATE CREATED:** 13.07.2022

**PROJECT:** KFC HEMEL HEMPSTEAD **DRAWN BY:** PCS

**CONTRACT NO:** \_\_\_\_\_ **DRAWING NO:** [CL.1] **REV:** 3

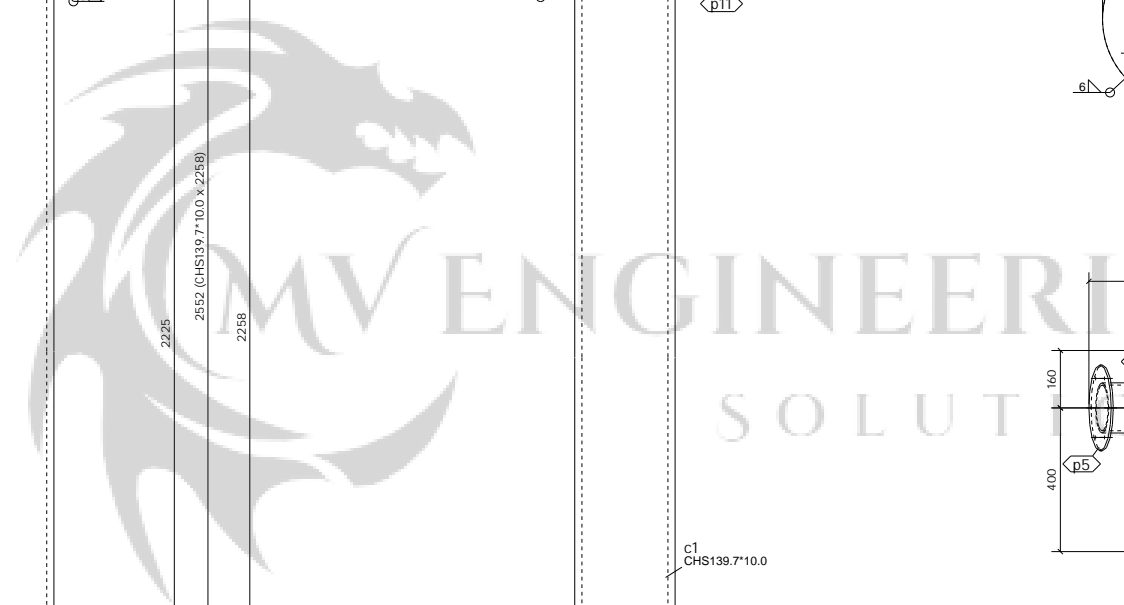
1 No. COLUMN

REQUIRED AS DRAWN MARKED CL1

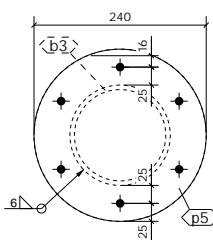
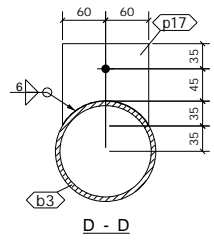
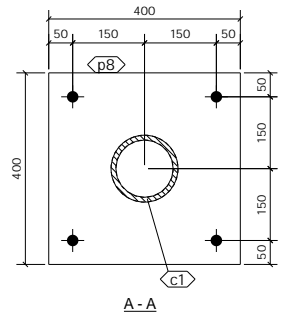
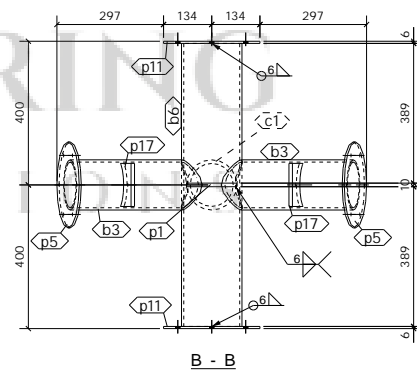
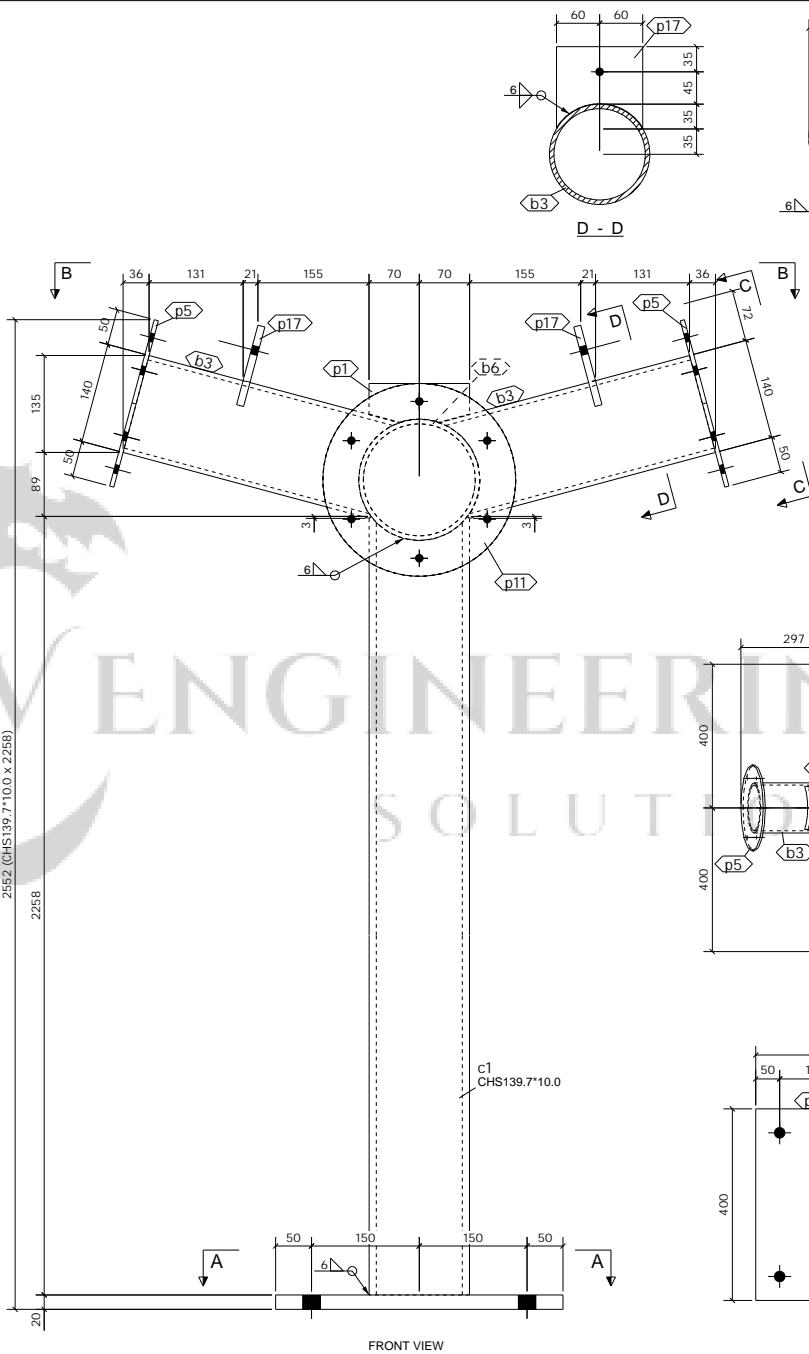
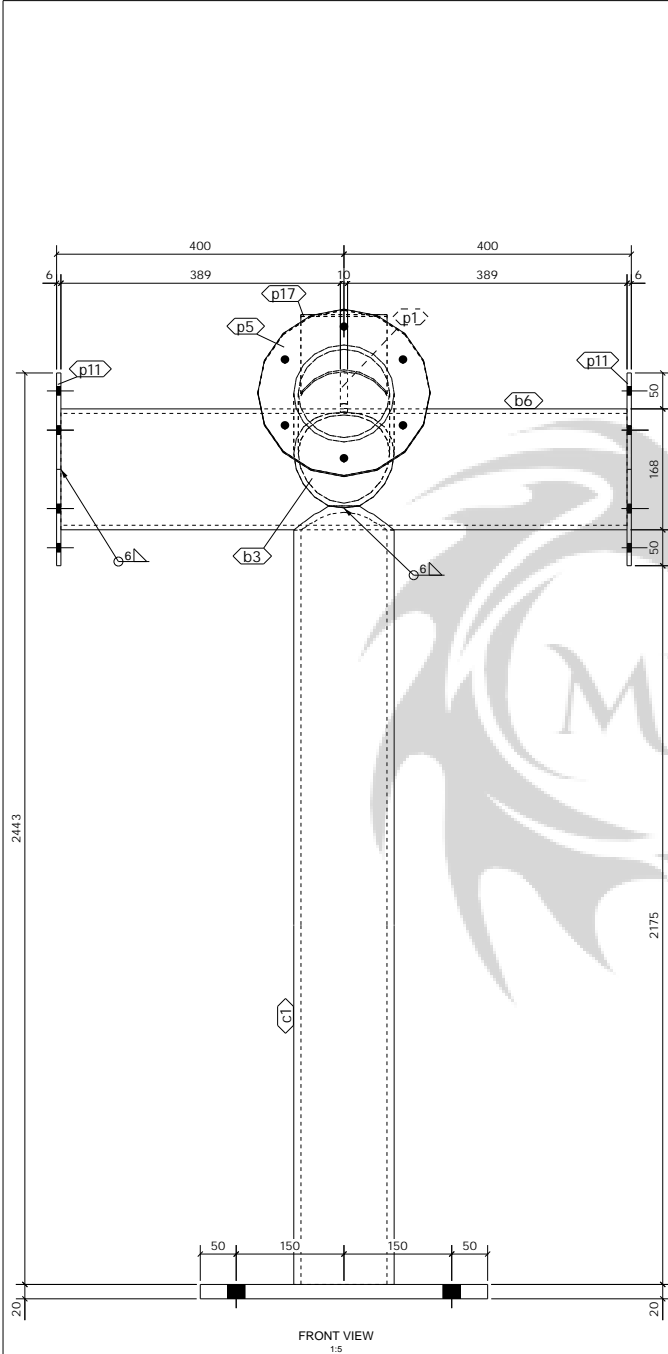
ASSEMBLY / SUB ASSEMBLY STATUS
1 THIS IS IT'S OWN ASSEMBLY

2443

Tekna Structures







SHOP MATERIAL LIST FOR 1 ASSEMBLY						
Mark	Size	Grade	No.	Length (mm)	Area (m <sup>2</sup> )	Weight (kg)
b3	CHS139.7*6.3	S355-JR	2	361	0.303	13.8
b6	CHS168.3*6.3	S355-JR	1	788	0.419	19.6
c1	CHS139.7*10.0	S275	1	2258	0.984	70.4
p1	FLT10*140	S275	1	55	0.018	0.5
p5	PLT6*239.7	S275	2	240	0.185	4.1
p8	FLT20*400	S275	1	400	0.352	25.1
p11	PLT6*268.3	S275	2	268	0.230	5.2
p17	FLT10*120	S275	2	115	0.053	1.7
				<b>Total</b>	<b>2.543</b>	<b>140.6</b>

**GENERAL NOTES**

All Holes to be 22 Dia UNO Slot hole length is to outside  
 All Welds to be 6 FW. UNO

All Steelwork Manufactured to: BS EN 1090-2, Execution Class EXC2 U.N.O.

FINISH S.B. & PRIME

LOT 0 QTY 4  
 PHASE 1 QTY 4

**FABRICATION STATUS**

Sawn by: \_\_\_\_\_ Date: \_\_\_\_\_  
 Fabricated by: \_\_\_\_\_ Date: \_\_\_\_\_  
 Welded by: \_\_\_\_\_ Date: \_\_\_\_\_  
 Loaded by: \_\_\_\_\_ Date: \_\_\_\_\_  
 Checked by: \_\_\_\_\_ Date: \_\_\_\_\_

2	FOR FABRICATION	PCS	19.08.2022	SK	19.08.2022
1	FOR FABRICATION	PCS	14.07.2022	SK	14.07.2022
REV	DESCRIPTION	By	Date	By	Date
MARK	CREATED	CHECKED			

**CLIENT:** \_\_\_\_\_ **DATE CREATED:** 13.07.2022

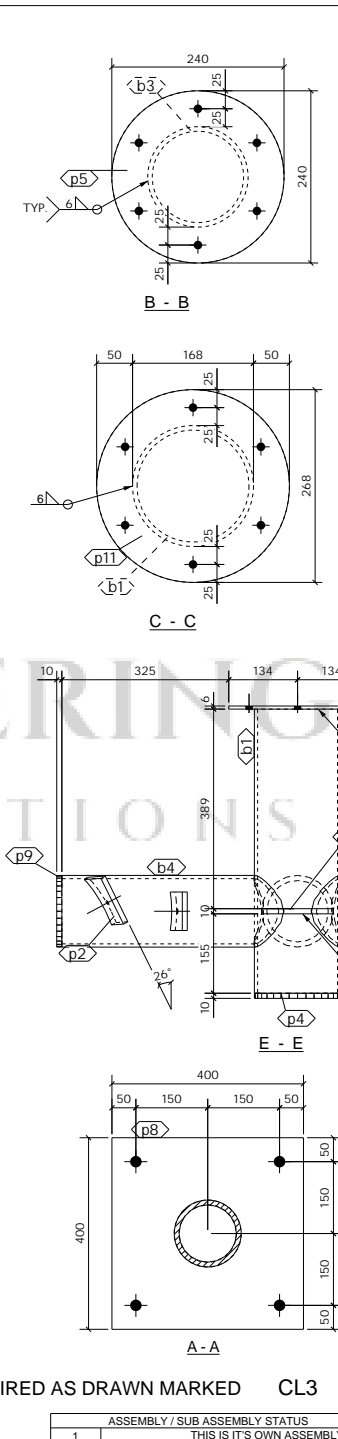
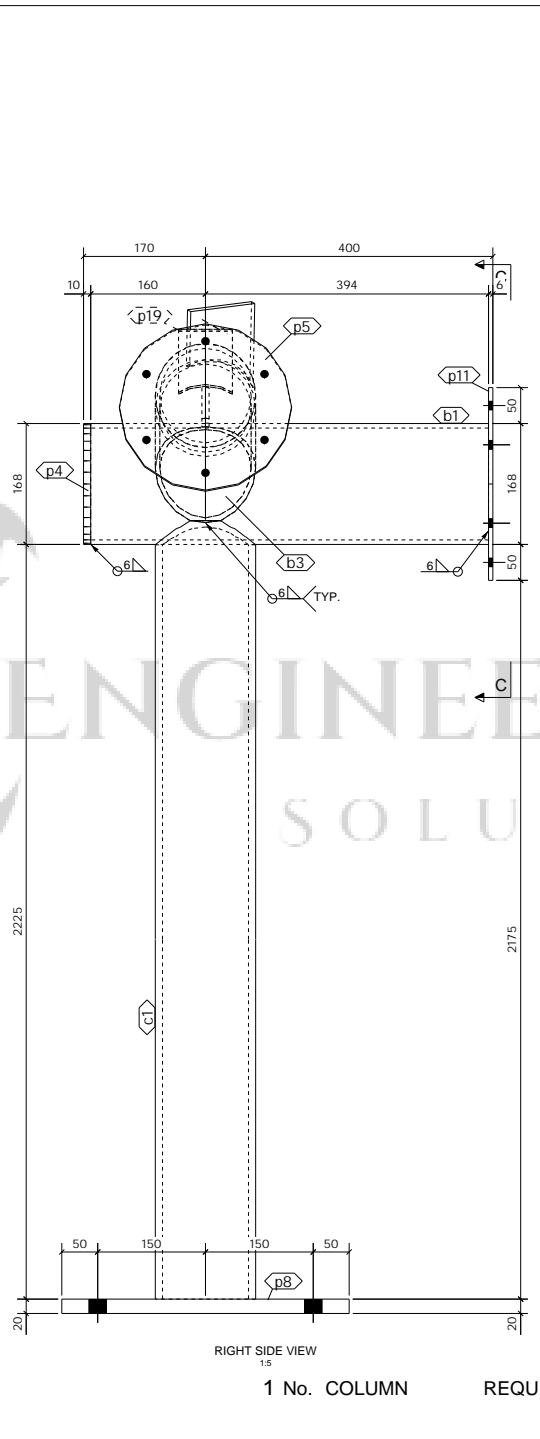
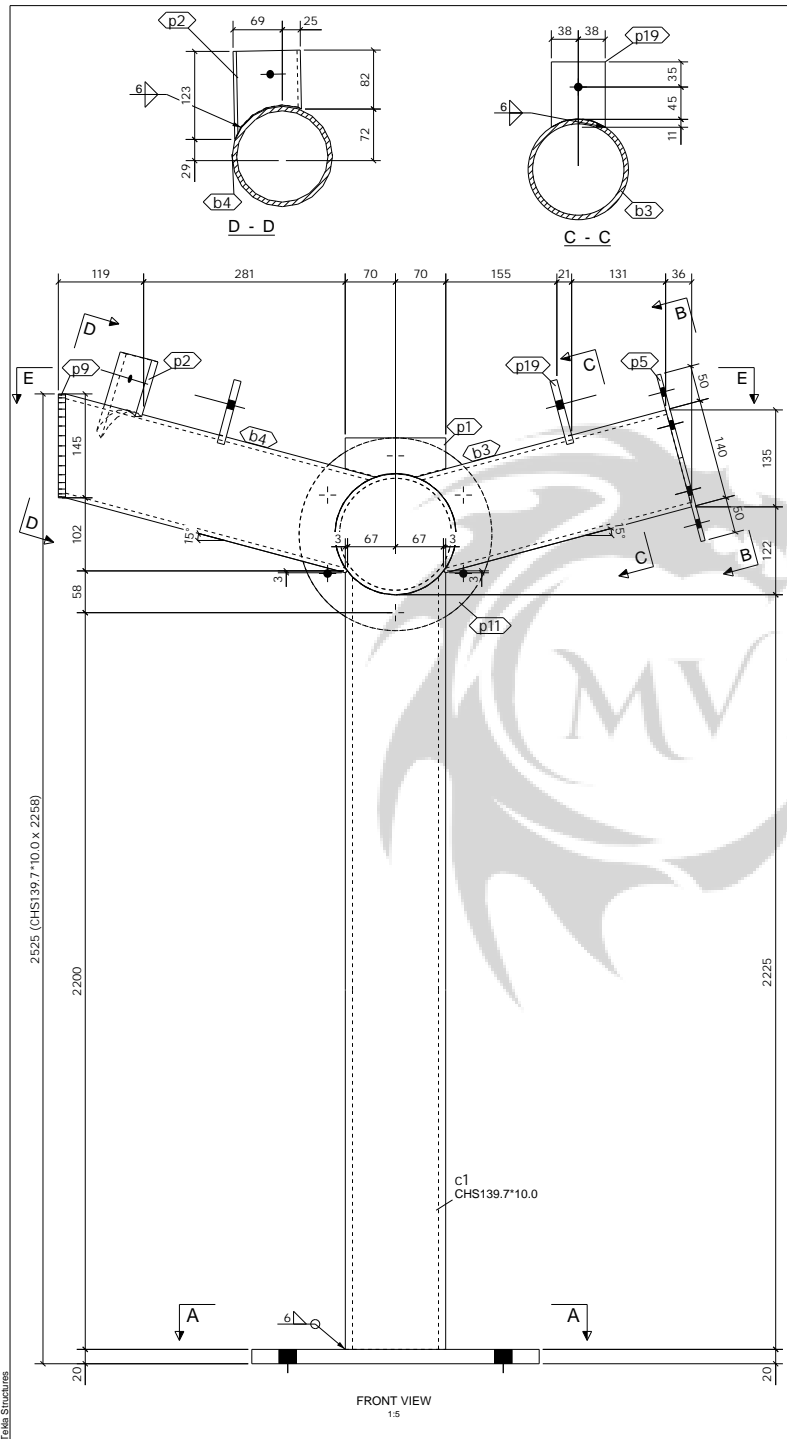
**PROJECT:** KFC HEMEL HEMPSTEAD **DRAWN BY:** PCS

**CONTRACT NO.:** \_\_\_\_\_ **DRAWING NO.:** [CL.2] **REV:** 2

ASSEMBLY / SUB ASSEMBLY STATUS
4 THIS IS IT'S OWN ASSEMBLY



4 No. COLUMN REQUIRED AS DRAWN MARKED CL2



SHOP MATERIAL LIST FOR 1 ASSEMBLY						
Mark	Size	Grade	No.	Length (mm)	Area (m <sup>2</sup> )	Weight (kg)
b1	CHS168.3*6.3	S355-JR	1	554	0.295	13.8
b3	CHS139.7*6.3	S355-JR	1	361	0.151	6.9
b4	CHS139.7*6.3	S355-JR	1	447	0.181	8.3
c1	CHS139.7*10.0	S275	1	2258	0.984	70.4
p1	FLT10*140	S275	1	55	0.018	0.5
p2	FLT10*100	S275	1	123	0.021	0.7
p4	PLT10*167.5	S275	1	167	0.049	1.7
p5	PLT6*239.7	S275	1	240	0.092	2.1
p8	FLT20*400	S275	1	400	0.352	25.1
p9	PLT10*139	S275	1	144	0.036	1.2
p11	PLT6*268.3	S275	1	268	0.115	2.6
p19	FLT10*75	S275	2	91	0.032	1.0
				<b>Total</b>	<b>2.327</b>	<b>134.4</b>

**GENERAL NOTES**

All Holes to be 22 Dia UNO Slot hole length is to outside  
All Welds to be 6 FW UNO

All Steelwork Manufactured to:  
BS EN 1090-2; Execution Class EXC2 U.N.O.

FINISH S.B. & PRIME

LOT 0 QTY 1  
PHASE 1 QTY 1

**FABRICATION STATUS**

Sawn by: \_\_\_\_\_ Date: \_\_\_\_\_  
Fabricated by: \_\_\_\_\_ Date: \_\_\_\_\_  
Welded by: \_\_\_\_\_ Date: \_\_\_\_\_  
Loaded by: \_\_\_\_\_ Date: \_\_\_\_\_  
Checked by: \_\_\_\_\_ Date: \_\_\_\_\_

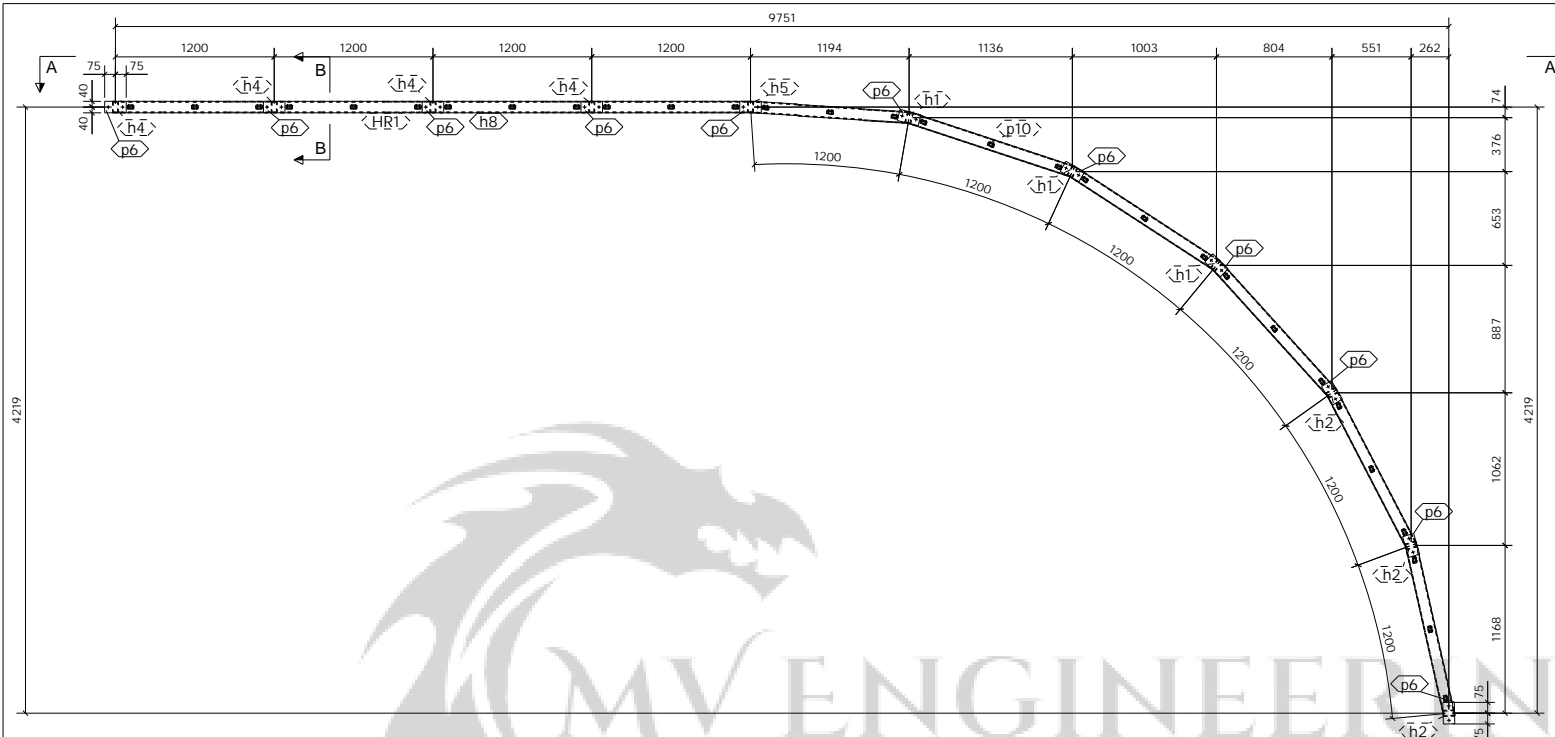
3	FOR FABRICATION	PCS	20.08.2022	SK	20.08.2022
2	FOR FABRICATION	PCS	19.08.2022	SK	19.08.2022
1	FOR FABRICATION	PCS	14.07.2022	SK	14.07.2022
REV	DESCRIPTION	By	Date	By	Date
MARK		CREATED		CHECKED	

**CLIENT:** KFC HEMEL HEMPSTEAD  
**DATE CREATED:** 13.07.2022

**PROJECT:** KFC HEMEL HEMPSTEAD  
**DRAWN BY:** PCS

**CONTRACT NO:** ----  
**DRAWING NO:** [CL.3]  
**REV:** 3

ASSEMBLY / SUB ASSEMBLY STATUS	
1	THIS IS IT'S OWN ASSEMBLY



SHOP MATERIAL LIST FOR 1 ASSEMBLY						
Mark	Size	Grade	No.	Length (mm)	Area (m <sup>2</sup> )	Weight (kg)
HR1	RHS80*40*5.0	S275	1	4840	1.137	41.8
h1	RHS80*40*5.0	S275	3	1450	1.024	37.6
h2	RHS80*40*5.0	S275	3	1450	1.024	37.6
h3	RHS80*40*5.0	S275	1	1229	0.289	10.5
h4	RHS80*40*5.0	S275	4	1450	1.366	50.1
h5	RHS80*40*5.0	S275	1	1450	0.341	12.5
h6	RHS80*40*5.0	S275	1	1182	0.277	10.2
h7	RHS80*40*5.0	S275	4	1207	1.128	41.3
h8	RHS80*40*5.0	S275	4	1160	1.094	40.1
h9	RHS80*40*5.0	S275	6	1167	1.635	59.9
p6	FLT10*80	S275	11	150	0.315	10.4
p10	FLT28*45	S275	60	45	0.660	19.3
				<b>Total</b>	<b>10.291</b>	<b>371.2</b>

**GENERAL NOTES**

All Holes to be 22 Dia UNO Slot hole length is to outside  
 All Welds to be 6 FW. UNO

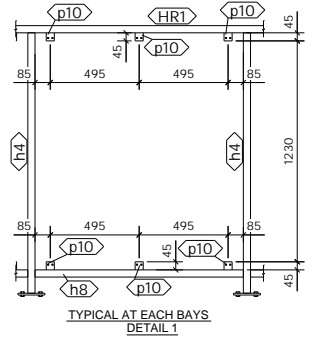
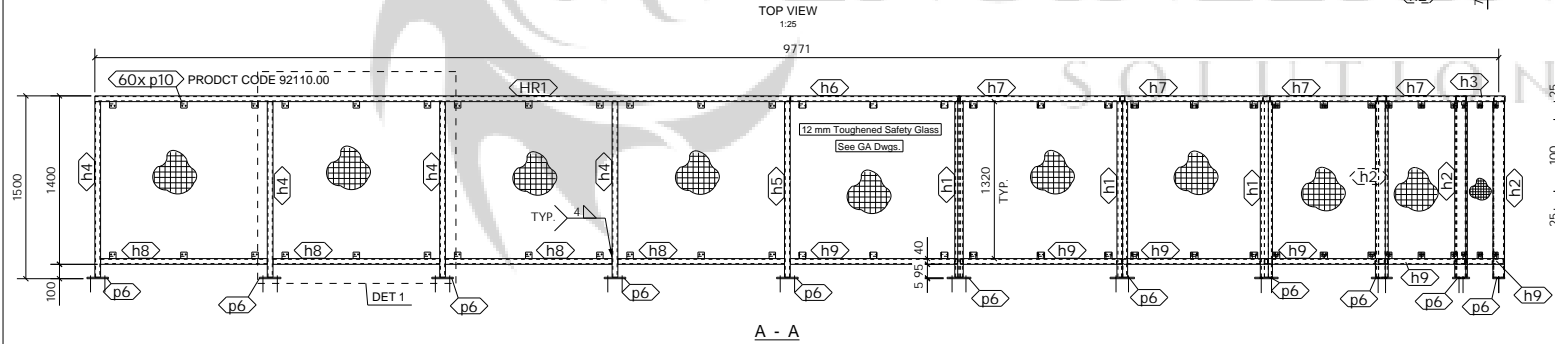
All Steelwork Manufactured to:  
 BS EN 1090-2: Execution Class EXC2 U.N.O.

FINISH **S.B. & PRIME**

LOT 0 QTY 1  
 PHASE 1 QTY 1

**FABRICATION STATUS**

Sawn by: \_\_\_\_\_ Date: \_\_\_\_\_  
 Fabricated by: \_\_\_\_\_ Date: \_\_\_\_\_  
 Welded by: \_\_\_\_\_ Date: \_\_\_\_\_  
 Loaded by: \_\_\_\_\_ Date: \_\_\_\_\_  
 Checked by: \_\_\_\_\_ Date: \_\_\_\_\_



PART MARK p10 REFERS AS  
 PRODUCT CODE 92110.00

1 No. RAIL REQUIRED AS DRAWN MARKED HR1

REV	DESCRIPTION	DATE	BY	DATE	BY	DATE
1	FOR FABRICATION	14.07.2022	SK	14.07.2022		
	CREATED		CHECKED			

**CLIENT:** KFC HEMEL HEMPSTEAD  
**DATE CREATED:** 18.06.2022  
**PROJECT:** KFC HEMEL HEMPSTEAD  
**DRAWN BY:** PCS  
**CONTRACT NO.:** ----  
**DRAWING NO.:** [HR.1]  
**REV:** 1

ASSEMBLY / SUB ASSEMBLY STATUS
1 THIS IS IT'S OWN ASSEMBLY

SHOP MATERIAL LIST FOR 1 ASSEMBLY						
Mark	Size	Grade	No.	Length (mm)	Area (m <sup>2</sup> )	Weight (kg)
pu4	RHS80*40*3.2	S275	1	1865	0.440	10.6
s1	ROD12	S275	2	110	0.031	1.2
<b>Total</b>					0.472	11.8

**GENERAL NOTES**

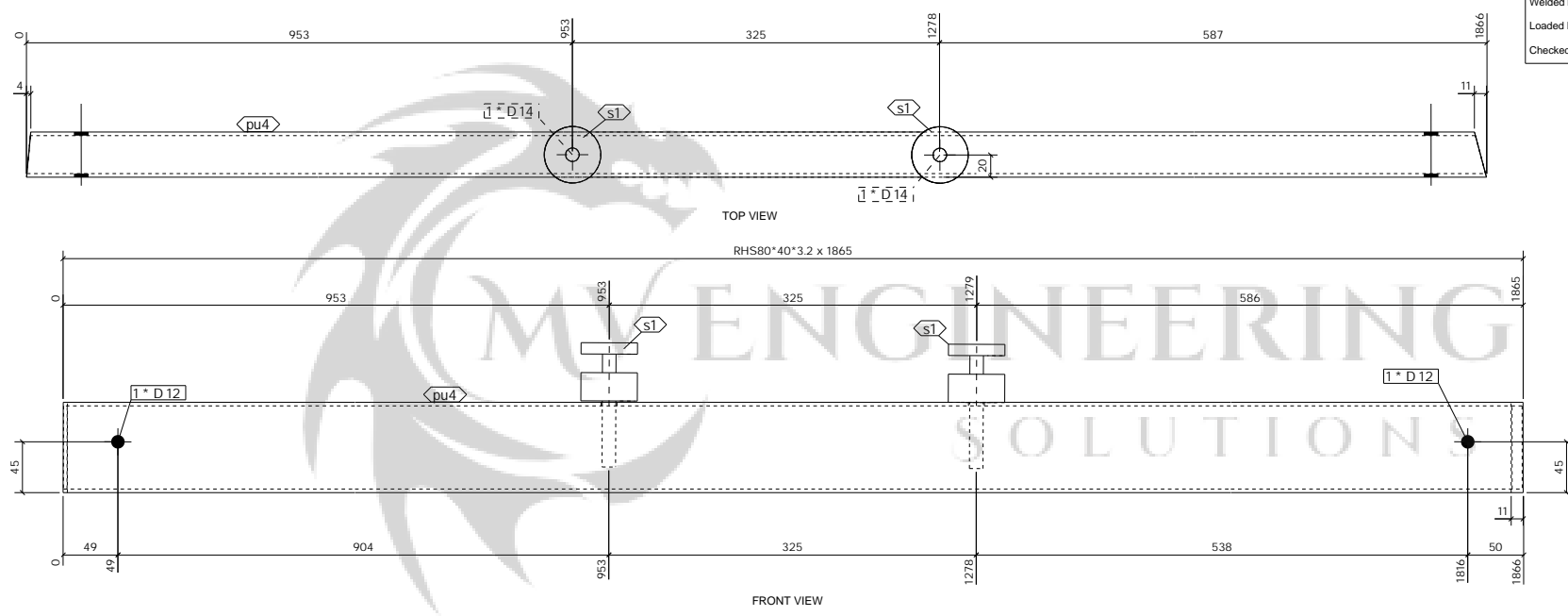
All Holes to be **22 Dia UNO** Slot hole length is to outside  
 All Welds to be **6 FW UNO**

All Steelwork Manufactured to:  
 BS EN 1090-2: Execution Class **EXC2** U.N.O.

FINISH	S.B. & PRIME	
LOT	0	QTY 1
PHASE	1	QTY 1

**FABRICATION STATUS**

Sawn by: \_\_\_\_\_ Date: \_\_\_\_\_  
 Fabricated by: \_\_\_\_\_ Date: \_\_\_\_\_  
 Welded by: \_\_\_\_\_ Date: \_\_\_\_\_  
 Loaded by: \_\_\_\_\_ Date: \_\_\_\_\_  
 Checked by: \_\_\_\_\_ Date: \_\_\_\_\_



PLEASE USE THE MATERIAL AS BELOW  
 PRODUCT CODE: 90747.2543  
 FOR PART MARK - S1

3	FOR FABRICATION	PCS	20.08.2022	SK	20.08.2022
2	FOR FABRICATION	PCS	19.08.2022	SK	19.08.2022
1	FOR FABRICATION	PCS	14.07.2022	SK	14.07.2022
REV	DESCRIPTION	By	Date	By	Date
MARK		CREATED		CHECKED	

**CLIENT:** \_\_\_\_\_ **DATE CREATED:** 13.07.2022  
**PROJECT:** KFC HEMEL HEMPSTEAD **DRAWN BY:** PCS  
**CONTRACT NO:** \_\_\_\_\_ **DRAWING NO:** [PU.1] **REV:** 3

1 No. PURLIN REQUIRED AS DRAWN MARKED PU1

ASSEMBLY / SUB ASSEMBLY STATUS	
1	THIS IS IT'S OWN ASSEMBLY

SHOP MATERIAL LIST FOR 1 ASSEMBLY						
Mark	Size	Grade	No.	Length (mm)	Area (m <sup>2</sup> )	Weight (kg)
pu2	RHS80*40*3.2	S275	1	8761	2.074	50.0
s1	ROD12	S275	14	110	0.219	8.2
			<b>Total</b>	<b>2.294</b>	<b>58.2</b>	

**GENERAL NOTES**

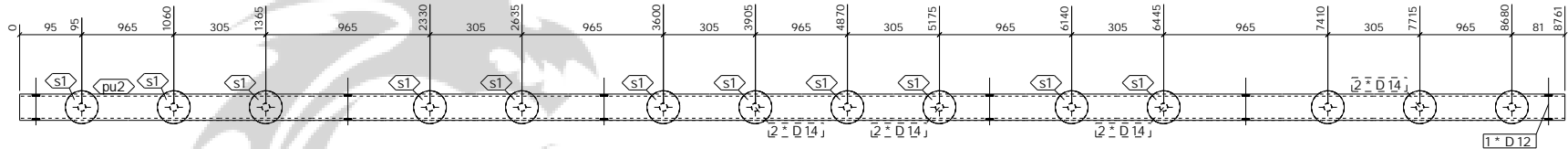
All Holes to be **22 Dia UNO** Slot hole length is to outside  
 All Welds to be **6 FW. UNO**

All Steelwork Manufactured to:  
 BS EN 1090-2: Execution Class **EXC2** U.N.O.

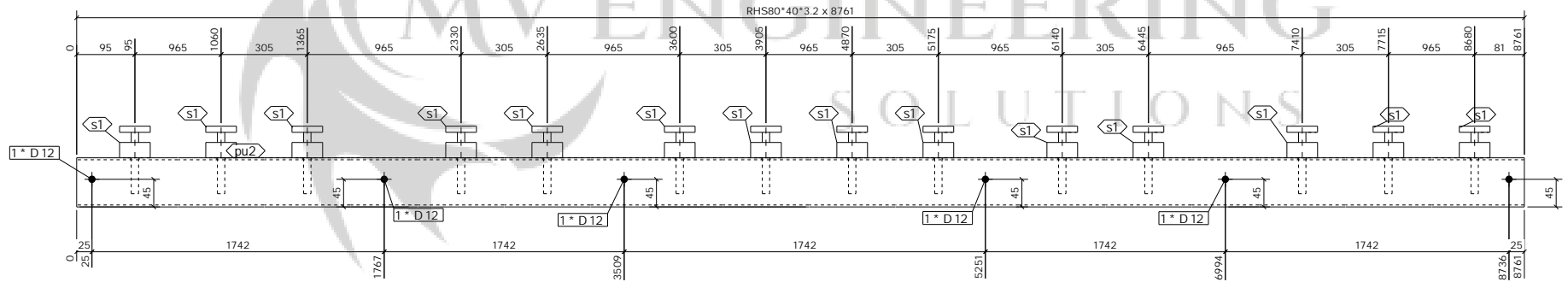
FINISH **S.B. & PRIME**  
 LOT **0** QTY **1**  
 PHASE **1** QTY **1**

**FABRICATION STATUS**

Sawn by: \_\_\_\_\_ Date: \_\_\_\_\_  
 Fabricated by: \_\_\_\_\_ Date: \_\_\_\_\_  
 Welded by: \_\_\_\_\_ Date: \_\_\_\_\_  
 Loaded by: \_\_\_\_\_ Date: \_\_\_\_\_  
 Checked by: \_\_\_\_\_ Date: \_\_\_\_\_



TOP VIEW



FRONT VIEW

PLEASE USE THE MATERIAL AS BELOW  
 PRODUCT CODE: 90747.2543  
 FOR PART MARK - S1

3	FOR FABRICATION	PCS	20.08.2022	SK	20.08.2022
2	FOR FABRICATION	PCS	19.08.2022	SK	19.08.2022
1	FOR FABRICATION	PCS	14.07.2022	SK	14.07.2022
REV	DESCRIPTION	By	Date	By	Date
MARK	DESCRIPTION	CREATED	CHECKED		

**CLIENT:** \_\_\_\_\_ **DATE CREATED:** 13.07.2022  
**PROJECT:** KFC HEMEL HEMPSTEAD **DRAWN BY:** PCS  
**CONTRACT NO:** \_\_\_\_\_ **DRAWING NO:** [PU.2] **REV:** 3

1 No. PURLIN

REQUIRED AS DRAWN MARKED PU2

ASSEMBLY / SUB ASSEMBLY STATUS	
1	THIS IS IT'S OWN ASSEMBLY

SHOP MATERIAL LIST FOR 1 ASSEMBLY						
Mark	Size	Grade	No.	Length (mm)	Area (m <sup>2</sup> )	Weight (kg)
pu3	RHS80*40*3.2	S275	1	8761	2.074	50.0
s1	ROD12	S275	14	110	0.219	8.2
				<b>Total</b>	<b>2.294</b>	<b>58.2</b>

**GENERAL NOTES**

All Holes to be 22 Dia UNO Slot hole length is to outside  
 All Welds to be 6 FW. UNO

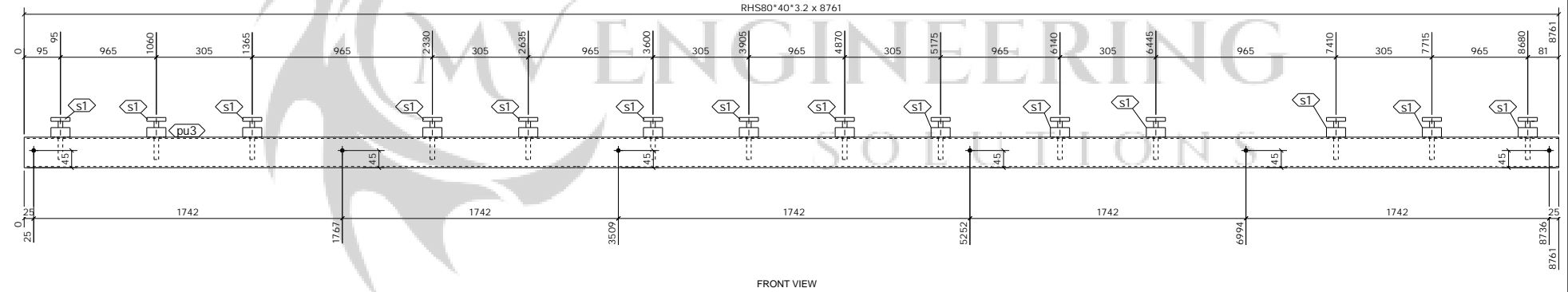
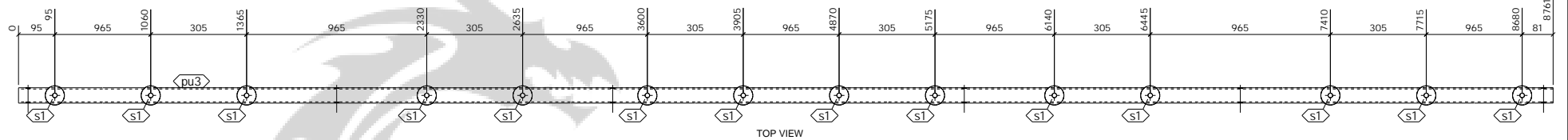
All Steelwork Manufactured to:  
 BS EN 1090-2: Execution Class **EXC2** U.N.O.

FINISH **S.B. & PRIME**

LOT 0 QTY 2  
 PHASE 1 QTY 2

**FABRICATION STATUS**

Sawn by: \_\_\_\_\_ Date: \_\_\_\_\_  
 Fabricated by: \_\_\_\_\_ Date: \_\_\_\_\_  
 Welded by: \_\_\_\_\_ Date: \_\_\_\_\_  
 Loaded by: \_\_\_\_\_ Date: \_\_\_\_\_  
 Checked by: \_\_\_\_\_ Date: \_\_\_\_\_



PLEASE USE THE MATERIAL AS BELOW  
 PRODUCT CODE: 90747.2543  
 FOR PART MARK - S1

3	FOR FABRICATION	PCS	20.08.2022	SK	20.08.2022
2	FOR FABRICATION	PCS	19.08.2022	SK	19.08.2022
1	FOR FABRICATION	PCS	14.07.2022	SK	14.07.2022
REV	By	Date	By	Date	
MARK	DESCRIPTION	CREATED	CHECKED		

**CLIENT:** \_\_\_\_\_ **DATE CREATED:** 13.07.2022  
**PROJECT:** KFC HEMEL HEMPSTEAD **DRAWN BY:** PCS  
**CONTRACT NO:** \_\_\_\_\_ **DRAWING NO:** [PU.3] **REV:** 3

2 No. PURLIN

REQUIRED AS DRAWN MARKED PU3

ASSEMBLY / SUB ASSEMBLY STATUS	
2	THIS IS IT'S OWN ASSEMBLY

SHOP MATERIAL LIST FOR 1 ASSEMBLY							
Mark	Size	Grade	No.	Length (mm)	Area (m <sup>2</sup> )	Weight (kg)	
pu5	RHS80*40*3.2	S275	1	2014	0.474	11.4	
s1	ROD12	S275	3	110	0.047	1.8	
					<b>Total</b>	0.521	13.2

**GENERAL NOTES**

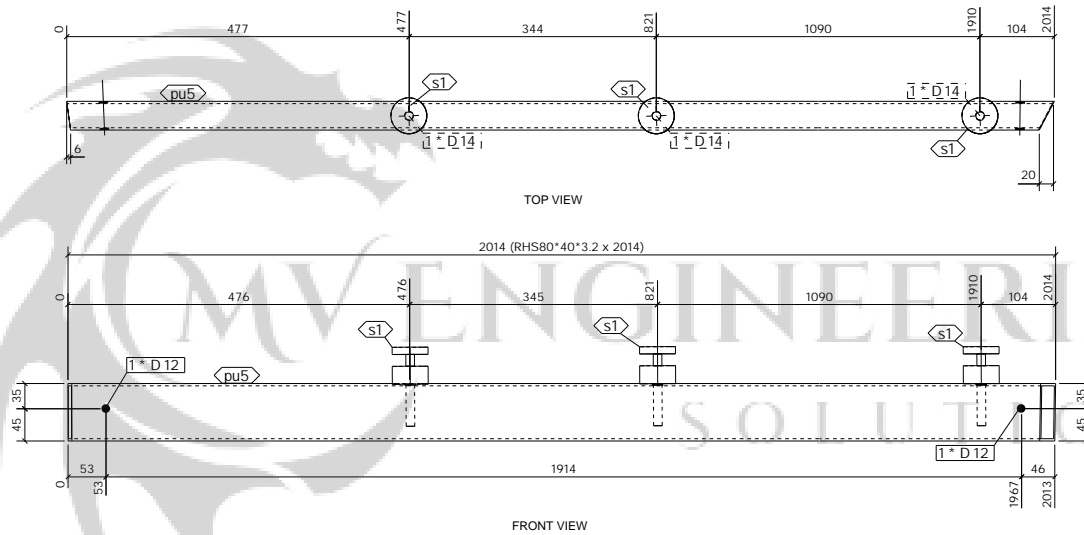
All Holes to be **22 Dia UNO** Slot hole length is to outside  
 All Welds to be **6 FW. UNO**

All Steelwork Manufactured to:  
 BS EN 1090-2: Execution Class **EXC2** U.N.O.

FINISH **S.B. & PRIME**  
 LOT **0** QTY **1**  
 PHASE **1** QTY **1**

**FABRICATION STATUS**

Sawn by: \_\_\_\_\_ Date: \_\_\_\_\_  
 Fabricated by: \_\_\_\_\_ Date: \_\_\_\_\_  
 Welded by: \_\_\_\_\_ Date: \_\_\_\_\_  
 Loaded by: \_\_\_\_\_ Date: \_\_\_\_\_  
 Checked by: \_\_\_\_\_ Date: \_\_\_\_\_



PLEASE USE THE MATERIAL AS BELOW  
 PRODUCT CODE: 90747.2543  
 FOR PART MARK - S1

3	FOR FABRICATION	PCS	20.08.2022	SK	20.08.2022
2	FOR FABRICATION	PCS	19.08.2022	SK	19.08.2022
1	FOR FABRICATION	PCS	14.07.2022	SK	14.07.2022
REV	By	Date	By	Date	
MARK	DESCRIPTION	CREATED	CHECKED		

**CLIENT:** \_\_\_\_\_ **DATE CREATED:** 13.07.2022  
**PROJECT:** KFC HEMEL HEMPSTEAD **DRAWN BY:** PCS  
**CONTRACT NO:** \_\_\_\_\_ **DRAWING NO:** [PU.4] **REV:** 3

1 No. PURLIN

REQUIRED AS DRAWN MARKED PU4

ASSEMBLY / SUB ASSEMBLY STATUS	
1	THIS IS IT'S OWN ASSEMBLY

SHOP MATERIAL LIST FOR 1 ASSEMBLY						
Mark	Size	Grade	No.	Length (mm)	Area (m <sup>2</sup> )	Weight (kg)
pu1	RHS80*40*3.2	S275	1	5254	1.243	30.0
s1	ROD12	S275	9	110	0.141	6.3
				<b>Total</b>	<b>1.384</b>	<b>35.2</b>

**GENERAL NOTES**

All Holes to be **22 Dia UNO** Slot hole length is to outside  
 All Welds to be **6 FW. UNO**

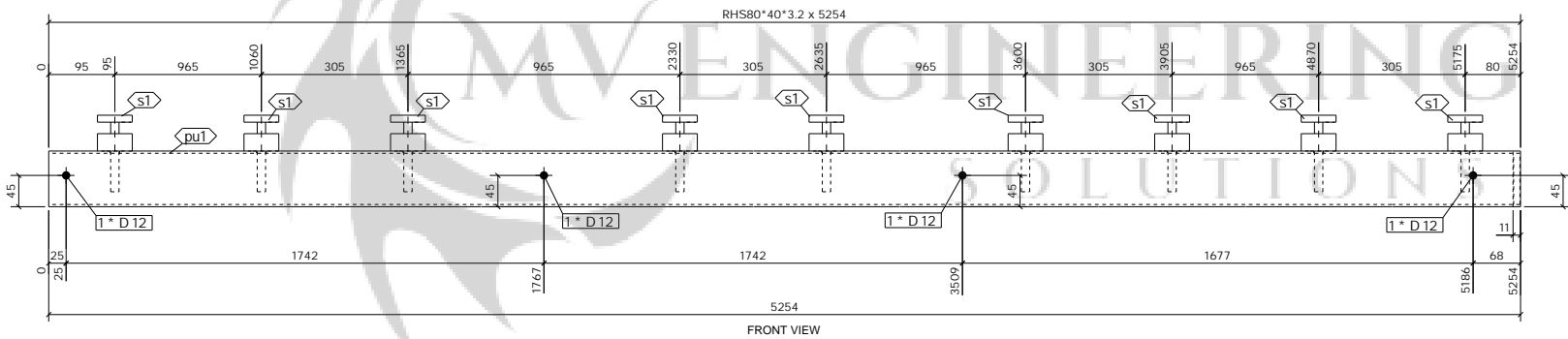
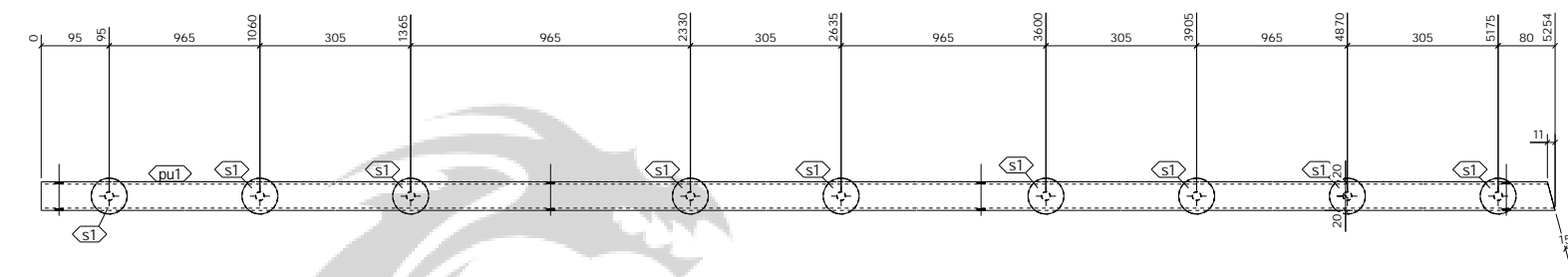
All Steelwork Manufactured to:  
 BS EN 1090-2: Execution Class **EXC2** U.N.O.

FINISH **S.B. & PRIME**

LOT **0** QTY **1**  
 PHASE **1** QTY **1**

**FABRICATION STATUS**

Sawn by: \_\_\_\_\_ Date: \_\_\_\_\_  
 Fabricated by: \_\_\_\_\_ Date: \_\_\_\_\_  
 Welded by: \_\_\_\_\_ Date: \_\_\_\_\_  
 Loaded by: \_\_\_\_\_ Date: \_\_\_\_\_  
 Checked by: \_\_\_\_\_ Date: \_\_\_\_\_



PLEASE USE THE MATERIAL AS BELOW  
 PRODUCT CODE: 90747.2543  
 FOR PART MARK - S1

REV	MARK	DESCRIPTION	By	Date	By	Date
3		FOR FABRICATION	PCS	20.08.2022	SK	20.08.2022
2		FOR FABRICATION	PCS	19.08.2022	SK	19.08.2022
1		FOR FABRICATION	PCS	14.07.2022	SK	14.07.2022
				CREATED		CHECKED

**CLIENT:** \_\_\_\_\_ **DATE CREATED:** 13.07.2022  
**PROJECT:** KFC HEMEL HEMPSTEAD **DRAWN BY:** PCS  
**CONTRACT NO:** \_\_\_\_\_ **DRAWING NO:** [PU.5] **REV:** 3

1 No. PURLIN REQUIRED AS DRAWN MARKED PU5

ASSEMBLY / SUB ASSEMBLY STATUS
1 THIS IS IT'S OWN ASSEMBLY



**SHOP MATERIAL LIST FOR 1 ASSEMBLY**

Mark	Size	Grade	No.	Length (mm)	Area (m) <sup>2</sup>	Weight (kg)
p12	FLT6*60	S275	1	142	0.019	0.4
pu6	MET-2-142M13	S275	1	8839	5.023	25.5
<b>Total</b>					5.042	25.9

**GENERAL NOTES**

All Holes to be **22** Dia UNO Slot hole length is to outside  
 All Welds to be **6** FW. UNO

All Steelwork Manufactured to:  
 BS EN 1090-2: Execution Class **EXC2** U.N.O.

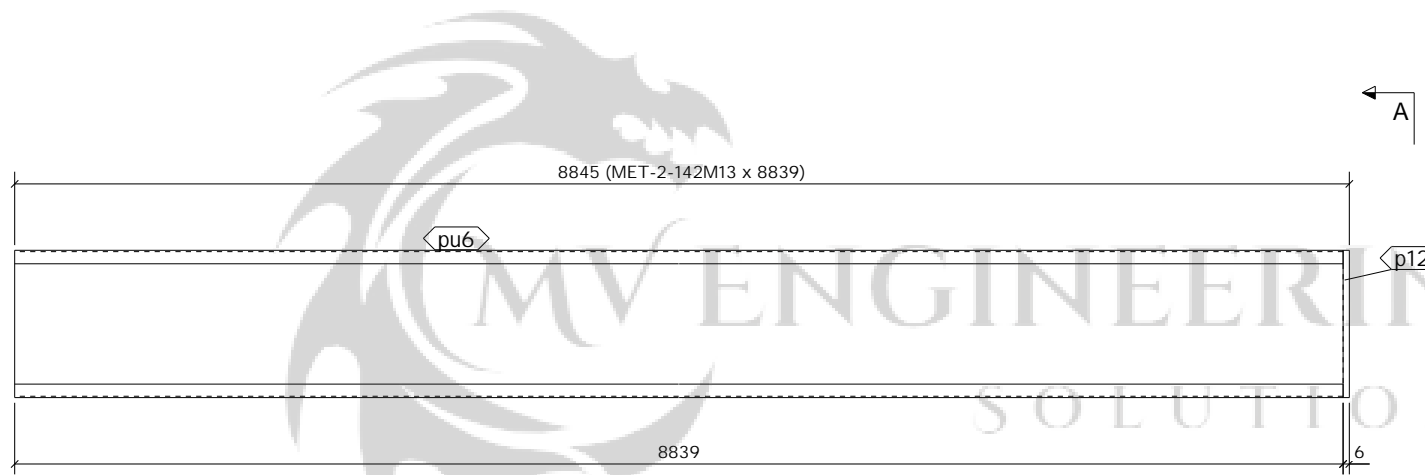
FINISH **S.B. & PRIME**

LOT **0** QTY **1**

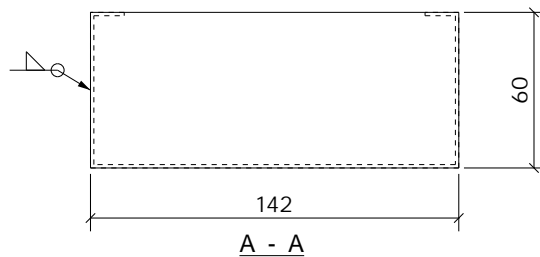
PHASE **1** QTY **1**

**FABRICATION STATUS**

Sawn by: \_\_\_\_\_ Date: \_\_\_\_\_  
 Fabricated by: \_\_\_\_\_ Date: \_\_\_\_\_  
 Welded by: \_\_\_\_\_ Date: \_\_\_\_\_  
 Loaded by: \_\_\_\_\_ Date: \_\_\_\_\_  
 Checked by: \_\_\_\_\_ Date: \_\_\_\_\_



FRONT VIEW



1 No. PURLIN

REQUIRED AS DRAWN MARKED PU6

REV	DESCRIPTION	By	Date	By	Date
1	FOR FABRICATION	PCS	14.07.2022	SK	14.07.2022
MARK	DESCRIPTION	CREATED	CHECKED		

**CLIENT:** ----- **DATE CREATED:** 13.07.2022

**PROJECT:** KFC HEMEL HEMPSTEAD **DRAWN BY:** PCS

**CONTRACT NO:** ---- **DRAWING NO:** [PU.6] **REV:** 1

ASSEMBLY / SUB ASSEMBLY STATUS	
1	THIS IS IT'S OWN ASSEMBLY